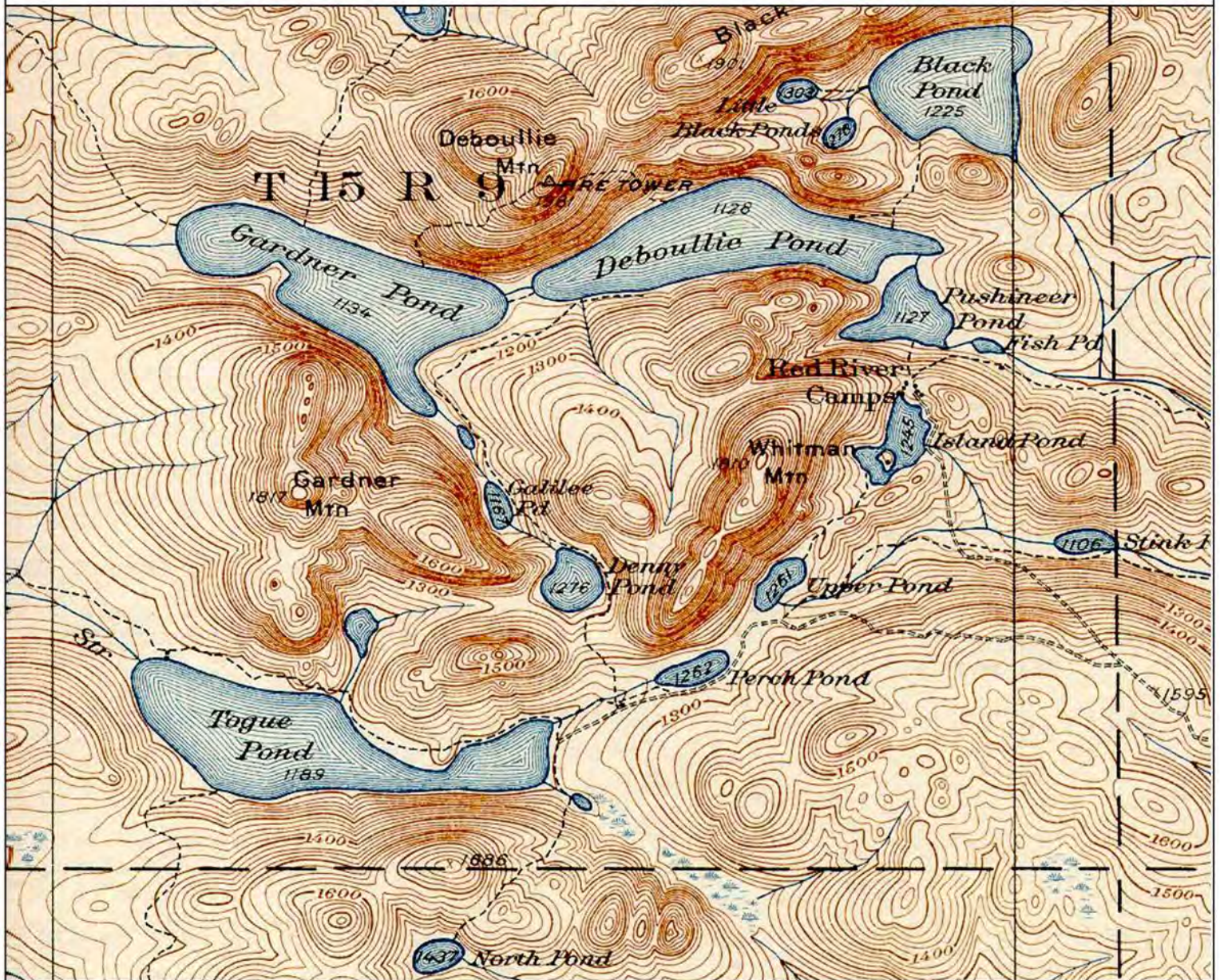


2011-2012 FISHING REGULATIONS OF THE NORTH MAINE WOODS' DEBOULLIE TOWNSHIP



1935 USGS Topographic Map

Source: University of New Hampshire Library Digital Collections Initiative

POND	MIN. SIZE	LIMIT	REGULATION	POND	MIN. SIZE	LIMIT	REGULATION
Island	6"	2	FFO	Black	18"	1	ALO
Upper	6"	2	FFO	Ferguson	18"	1	ALO
Denny	6"	2	FFO	Stink	—	C&R	FFO
Galilee	6"	2	FFO	Moccasin	—	C&R	FFO
North	6"	2	FFO	Gardner	6"	2	NLFAB
N. Little Black	6"	2	FFO	Deboullie	6"	2	NLFAB
S. Little Black	18"	1	FFO	Pushineer	6"	2	NLFAB
Crater	18"	1	FFO	Perch	6"	2	NLFAB
				Togue	6"	2	Gen. Law

RED RIVER CAMPS

Jen and Joe Brophy-Price P.O. Box 320 Portage, ME 04768

(207)554-0420 jen@redrivercamps.com

How to find fishing regulations for waters in this county.

1. Determine the waterbody you are going to fish.
2. Review the Statewide General Law Fishing Regulation Section.
3. Review the Western and Northern County Fishing Rules Section.
4. Review the list of waterbodies in the County that have special regulations (S-Codes or written).
 - a. If the waterbody you are going to fish is listed the special rules take the place of the standard regulations for those items listed (i.e. season, daily limits, etc.)
 - b. If the waterbody you are going to fish is not listed then Statewide General Law and Western and Northern County Regulations Apply.

FISHING RULES FOR THE WESTERN AND NORTHERN COUNTIES

(Aroostook, Franklin, Oxford north of the Androscoggin River, Piscataquis, and Somerset)

Lakes and Ponds:

- From April 1 - September 30: Unless otherwise indicated under the appropriate county, open to open water fishing under general law fishing provisions (see page 5),
- From October 1 - March 31: Unless otherwise indicated under the appropriate county, closed to open water fishing. Lakes and ponds with extended open water seasons will be indicated under the appropriate county:
- ALL LAKES AND PONDS ARE CLOSED TO ICE FISHING, unless indicated with an A or B code, which defines the winter fishing season.

Brooks, streams and rivers:

- From April 1 - August 15: Unless otherwise indicated under the appropriate county, open to open water fishing under general law fishing provisions (see page 5).
- From August 16 - September 30: Fishing in brooks, streams and rivers is restricted to the use of artificial lures or flies only, and the combined total daily bag limit for trout, landlocked salmon, and togue is 1 fish.
- From October 1 - March 31: Unless otherwise indicated under the appropriate county, brooks, streams and rivers are closed to all fishing. Any water open to open water fishing or ice fishing between October 1 - March 31 will be indicated under the appropriate county.

Many waters have special rules that differ from the general law provisions. Check the list of individual waters under each county. If the water you wish to fish appears in that list, the letter codes will direct you to the special rule(s) which are in effect that differ from general law or the provisions for Maine's Western and Northern counties. The meanings of the letter codes are as follows:

- A:** Open to ice fishing and open water fishing for all fish from December 1 - April 30.
- B:** Open to ice fishing and open water fishing from January 1 - March 31.
- CI:** Closed to ice fishing.
- S:** Special rule(s) in effect - Special Rules (S-codes) are listed on page 7.

(Note: Special rules may restrict the general law fishing provisions.)

General Law

General Law applies unless otherwise specified. Please refer to individual waters for more detail.

SEASONS

- For Southern and Eastern Counties, see page 16
- For Western and Northern Counties, see page 44

LANDLOCKED SALMON, TROUT, TOGUE (LAKE TROUT)

DAILY BAG & POSSESSION LIMITS:	MINIMUM LEGAL LENGTHS		
	Lakes & Ponds	Rivers, Brooks, Streams	
5 Brook Trout ^{A,B} (includes Splake and Arctic Charr)	6 inches	6 inches	The term "trout" when used alone includes brook trout, brown trout, rainbow trout, splake and Arctic Charr (Sunapee trout and blueback trout) The term "brook trout" also includes splake and Arctic Charr (Sunapee Trout and Blueback Trout).
2 Landlocked Salmon ^A	14 inches ^C	14 inches ^C	
2 Togue (Lake Trout) ^A	18 inches	18 inches	
2 Brown Trout ^A	14 inches ^C	6 inches ^C	
2 Rainbow Trout ^A	12 inches	6 inches	
^A Important...From August 16 - September 30, fishing on rivers, brooks, and streams statewide is restricted to the use of artificial lures only and the combined daily bag limit for trout, landlocked salmon, and togue (lake trout) is 1 fish.			
^B Important...On lakes and ponds in Androscoggin, Cumberland, Franklin, Hancock, Kennebec, Knox, Lincoln, Oxford, Penobscot, Sagadahoc, Waldo, Washington and York counties the daily bag limit on brook trout is 2 fish.			
^C In Washington County - except West Grand, East Grand, Spednic, Cathance, Nash, Lower Sysladobsis and East Musquash Lakes - the maximum length limit on landlocked salmon and brown trout is 25 inches.			

BASS (largemouth and smallmouth)

April 1 - June 30: Daily bag limit: 1 fish; artificial lures only; minimum length limit: 10 inches
July 1 - September 30: Daily bag limit: 3 fish; minimum length limit: 10 inches, only 1 exceeding 14 inches.
October 1 - March 31: Daily bag limit: 1 fish; minimum length limit: 10 inches.

OTHER SPECIES

Species	Daily Bag Limit	Minimum Length Limit
Pickarel	10 fish	None
Whitefish	3 fish	None
Smelts	2 quarts	None (see page 11 - laws & definitions)
Northern Pike	None	None
Muskellunge	None	None
American eel	50 fish	6 inches
Shad	2 fish	None
Striped Bass	1 fish	Between 20 and 26 inches in total length, or 40 inches or greater in total length.
Atlantic Salmon	See page 98	See page 98
Species not listed above	None	None

The daily bag, possession and minimum length limits on this page apply to waters open to fishing that DO NOT have special rules stating otherwise. Special Rules (S-Codes) can be found on page 7.

SPECIAL RULES FOR ICE FISHING AND OPEN WATER FISHING (S-CODES)

- S-1: Closed to taking smelts.
- S-2: Closed to taking smelts, except by hook and line.
- S-3: Tributaries closed to taking smelts.
- S-4: Use or possession of live fish as bait is prohibited. (The use of dead fish, salmon eggs, and worms permitted.)
- S-5: Fly fishing only.
- S-6: Artificial lures only.
- S-7: All trout, landlocked salmon, and togue caught must be released alive at once.
- S-8: Restricted to 2 lines per person.
- S-9: Open to fishing only for persons under 16 years of age. Restricted to two lines per person. Daily bag limit on trout: 2 fish.
- S-10: Remains open to open water fishing from October 1 - November 30: artificial lures only; all trout, landlocked salmon and togue must be released alive at once. Closed to open water fishing from December 1 - March 31.
- S-11: Reserved for additional options.
- S-12: Reserved for additional options.
- S-13: No size or bag limit on bass.
- S-14: Daily bag limit on bass: 1 fish; all bass between 16 and 20 inches must be released alive at once.
- S-15: All bass between 13 and 18 inches must be released alive at once. April 1 - June 30: daily bag limit on bass: 1 fish. July 1 - March 31: daily bag limit on bass: 2 fish.
- S-16: Daily bag limit on trout 2 fish; minimum length limit: 12 inches, only 1 may exceed 14 inches.
- S-17: Daily bag limit on trout: 2 fish; minimum length limit: 10 inches, only 1 may exceed 12 inches.
- S-18: Daily bag limit on trout: 1 fish; minimum length limit: 18 inches.
- S-19: Daily bag limit on trout: 2 fish.
- S-20: All trout less than 6 inches and longer than 12 inches must be released alive at once.
- S-21: Daily bag limit on trout: 1 fish; minimum length limit: 14 inches.
- S-22: Daily bag limit on landlocked salmon: 1 fish.
- S-23: Minimum length on landlocked salmon: 16 inches.
- S-24: Daily bag limit on landlocked salmon: 3 fish; minimum length limit: 12 inches.
- S-25: Daily bag limit on togue: 1 fish.
- S-26: Daily bag limit on togue: 3 fish; minimum length limit: 14 inches, only 1 may exceed 18 inches.
- S-27: Daily bag limit on togue: 6 fish; minimum length limit: 14 inches, only 1 may exceed 23 inches.
- S-28: Daily bag limit on white perch: 25 fish.
- S-29: No bag limit on pickerel. From July 1 - September 30: artificial lures only; the minimum length on trout is 8 inches.
- S-30: Indian Territory Regulations. See pages 89-93.
- S-31: Boundary waters with New Brunswick. See pages 93-95.
- S-32: Border waters with New Hampshire. See pages 95-97.
- S-33: Maximum length on landlocked salmon and brown trout: 25 inches.

AROOSTOOK COUNTY

Boundary water rules between Maine and New Brunswick can be found on pages 93-95. These waters are listed as S-31.

See general law fishing provisions on page 5, and special rules for Maine's western and northern counties on page 44. Many waters have special rules that differ from general law.

If the Aroostook County water you wish to fish is listed below, the letter code(s) will direct you to the rule(s) which are in effect that differ from general law or the special provisions for Maine's western and northern counties. The meanings of the letter codes are as follows:

- A:** Open to ice fishing and open water fishing for all fish from December 1 - April 30.
- B:** Open to ice fishing and open water fishing from January 1 - March 31.
- CI:** Closed to ice fishing.
- S:** Special rule(s) in effect - Special Rules (S-codes) are listed on page 7. (Note: Special rules may restrict the general law fishing provisions.)

Waters open to ice fishing are listed with an A or a B code which defines the winter fishing season. All other waters are closed to ice fishing.

ALLAGASH WILDERNESS
WATERWAY WATERS. See Piscataquis County, Pages 73-74.

Arnold Brook Lake, Presque Isle. **A**. S-19. Remains open from October 1 - November 30: S-6, S-7. Motorboats over 10 horsepower prohibited.

Aroostook River: All salmon caught in any flowing water of the Aroostook River

- Watershed, must be released alive at once.
- From the junction of Munsungan Stream and Millinocket Stream in T8R8 WELS downstream to the blue markers at the Oxbow Plantation/T9R7 WELS town line (includes tributaries upstream to the first highway bridge): S-6, S-17. From August 16 - September 30: S-6; Total daily bag limit on trout and togue: 1 fish.
 - From the Wisconsin Public Service Dam in Caribou downstream to the Maine/New Brunswick border (includes tributaries upstream to the first highway bridge): S-6, S-17. From August 16 - September 30: S-6; Total daily bag limit on trout and togue: 1 fish.
 - From the Wisconsin Public Service Company Dam in Caribou downstream to and including Otter Brook, including all tributaries in this section upstream to the first highway bridge intersecting each tributary: Children 12 years of age or younger may fish from shore with a single-baited hook and line.
 - From Hockenhull Brook in Fort Fairfield downstream to and including Pattee Brook, including all tributaries in this section upstream to the first highway bridge intersecting the tributary: Children 12 years of age or younger may fish from shore with a single-baited hook and line.

B Lake, Hammond. **CI**. S-4.

Bear Mountain Pond, Moro Pt. **CI**. S-19.

Beau Lake, T19&20R11 WELS, T20R12 WELS. **B**.

Beaver Tail Pond, T14R10 WELS. **CI**.

S-19. Remains open from October 1 - November 30: S-6, S-7.

Big Brook, T13R10 WELS, etc.

Motorboats prohibited on Big Brook from Burt Garrity Road to and including Big Brook Lake.

Black Brook Lake, Little, Caswell Pt.

CI. S-4.

AROOSTOOK COUNTY

Black Pond, T15R9 WELS. CI. S-6, S-18.
Tributaries and outlet: CI. S-18

Black Pond, St. John Plt. CI. Remains open from October 1 - November 30: S-6, S-7.

Black Lake and tributaries and outlet to barrier dam, Fort Kent. CI. S-4.

Motorboats over 6 horsepower prohibited.

Black Pond, Little (North) and Tributaries, T15R9 WELS. CI. S-5, S-19.
Outlet: CI. S-18.

Black Pond, Little (South), T15R9 WELS. CI. S-5, S-18. Remains open from October 1 – November 30: S-5, S-7.

Tributaries and outlet: CI. S-18.

Black River, Big, T14R14&15, etc. S-13.
From October 1 - November 30: S-6, S-13.
Open to taking bass and muskellunge only.
From the confluence of Five Mile Brook in T15R14 WELS upriver to the confluence of Depot Stream in T14R15 WELS. A. S-13, S-19.

Black River, Little, tributary to the St. John River. Motorboats over 10 horsepower prohibited from June 1 - September 15.

Blake Lake, T16R6 WELS. CI. S-6, S-17.

Bourgoin Lake, Frenchville. CI. S-4.

Bracket Lake, Weston. A. Remains open from October 1 - November 30: S-6, S-7.

Bradbury Lake, New Limerick. A. Remains open from October 1 - November 30: S-7.

Bradford Pond, Moro Plt. CI. S-4, S-19.

Bran Lake, St. Francis. CI. S-6, S-17.

Butterfield Lake, Caswell Plt. CI. S-4.

Campbell Pond, T18R13 WELS. CI. S-4.

Caribou Lake, Island Falls, T3R4 WELS. A. Remains open from October 1 - November 30: S-7.

Carlisle Pond, T8R3 WELS. CI. S-4.

Carr Pond, T13R8 WELS. B. S-2, S-8 (except that 5 lines may be used from sunset to sunrise while fishing for cusk), S-16, S-25. Tributaries and outlet: S-1.

Carry Lake, Littleton Twp. CI. S-4.

Remains open from October 1 - November 30: S-6, S-7.

Carry Pond, T16R4 WELS. CI. S-4.

Center Pond, T10R8 WELS. CI. S-4.

Chandler Lake, T9R8 WELS. B. S-16.

Chase Pond, Moro Plt. CI. S-19.

Chase Ponds, 1st, 2nd and 3rd, T14R9 WELS. CI. S-4, S-19, S-26.

Cochrane Lake, Smyrna, New Limerick. A. S-19. Remains open from October 1 - November 30: S-6, S-7.

Connors Brook and tributaries, T15R9 WELS. S-19.

Conroy Lake, Monticello. CI. S-19.

Remains open from October 1 - November 30: S-6, S-7.

County Road Lake, New Limerick. A. Remains open from October 1 - November 30: S-7.

Crater Pond and tributaries and outlet, T15R9 WELS. CI. S-6, S-18.

Cross Lake, T16 R5 WELS & Cross Lake Twp. B. S-2, S-3, S-16. (See also Fish River Thoroughfares)

Crystal Lake, Hersey. A. Remains open from October 1 - November 30: S-7.

Cunliffe Lake, T12R13 WELS. CI. S-4.

Daigle Ponds (2) and tributaries, New Canada Plt. CI. S-4. Remains open from October 1 - November 30: S-6, S-7.

Daaquam River, T11R17 WELS. S-13. From October 1 – November 30: S-6, S-13. Open to taking bass and muskellunge only.

Deboullie Lake, T15R9 WELS. CI. S-4, S-19. No size or bag limit on landlocked salmon. Tributaries and outlet: CI. S-19.

No size or bag limit on landlocked salmon.
Deep Lake, Littleton. CI. S-4. Remains open from October 1 - November 30: S-6, S-7.

Deering (Longfellow) Lake, Orient, Weston. B. S-2, S-3, S-13, S-19. Remains open from October 1 - December 31: S-6, S-7.

AROOSTOOK COUNTY

Denny Pond, T15R9 WELS. **CI.** S-5, S-19. Tributaries and outlet: S-19.

Dickwood Lake, Eagle Lake. **CI.** Remains open from October 1 - November 30: S-6, S-7.

Drew's (Meduxnekeag) Lake, Oakfield, New Limerick, Linneus. **B.** S-2, S-3, S-19. Remains open from October 1 - November 30: S-6, S-7.

Duck Pond, Moro Plt. **CI.** S-19.

Duck Pond, T2R4 WELS. **CI.** Remains open from October 1 - November 30: S-6, S-7.

Duck Pond and tributaries and outlet, T15R9 WELS. **CI.** S-4, S-19.

Durepo Lake, tributaries and outlet, Limestone. **CI.** S-4. Closed to taking live bait.

Eagle Lake, Wallagrass, Eagle Lake, T16R5&6 WELS. **B.** S-2, S-3, S-16, S-24, S-27. (See also Fish River Thoroughfares)

East Lake, T17R14 WELS. **B.** S-4.

Echo Lake and tributaries, Presque Isle. **CI.** S-4. Closed to taking live bait. Remains open from October 1 - November 30: S-6, S-7.

Eyelet Pond, T11&12 R12 WELS. **CI.** S-4.

Fall Brook Lake (Falls Pond) and Little Fall Brook (Little Falls Pond), Allagash Plt., T18R10 WELS. **CI.** S-4.

Faulkner Lake, Weston. **A.** Remains open from October 1 - November 30: S-7.

Ferguson Pond, T14R8 WELS. **CI.** S-18. Artificial lures only with one hook-a single pointed hook or a treble hook-allowed.

Fifth Lake Brook and tributaries, T15R9 WELS. S-19.

Fish River Lake, T13&14R8 WELS. **CI.** S-2, S-3, S-16.

Fish River excluding Thoroughfares, T13R8 WELS to the St. John River in Fort Kent: S-2, S-3.

- From Fish River Lake downstream to Round Pond: S-6, S-16.

- From Eagle Lake in Wallagrass Plt. (including tributaries upstream to the first road or railroad crossing) to the red markers above the Fish River Falls in Fort Kent: S-6, S-16 (See Soldier Pond). From August 16 - September 30: S-6. Total daily bag limit for trout, landlocked salmon and togue: 1 fish.
- From the Fish River Falls in Fort Kent downstream to the St. John River: S-13.

Fish River Thoroughfares (connecting Long, Mud, Cross, Square, Eagle and St. Froid Lakes). **CI.** S-1, S-16

From August 16 - September 30: S-6: Total daily bag limit for trout, landlocked salmon and togue: 1 fish.

Flinn Pond, T1R5 WELS, Benedicta. **A.** Remains open from October 1 - November 30: S-7.

Galilee Pond, T15R9 WELS. **CI.** S-5, S-19. Tributaries and outlet: **CI.** S-19.

Gardner Brook and tributaries, T15R9 WELS. S-19.

Gardner Lake, T15R9 WELS. **CI.** S-4, S-19. No size or bag limit on salmon. Tributaries and outlet: **CI.** S-19. No size or bag limit on salmon.

Gerard Pond, Caswell Plt. **CI.** S-4.

Gilbert Pond, St. John Plt. **CI.** S-4.

Gilbert Pond, Little, St. John Plt. **CI.** S-4.

Gilman Pond, Moro Plt. **CI.** S-4, S-19.

Glancy Lake, New Limerick. **A.** Remains open from October 1 - November 30: S-7.

Glazier Lake, T18 R10 WELS. S-31.

Grand Lake, East, North Lake, and the Thoroughfare between, Orient, Weston. S-31.

Grass Pond, Moro Plt. **CI.** S-4, S-19.

Green Pond, Moro Plt. **CI.** S-5, S-18.

Green Pond, New Limerick. **A.** Remains open from October 1 - November 30: S-6, S-7.

Greenlaw Brook Drainage (including Malabeam Lake, Chapman Pit and

AROOSTOOK COUNTY

Green Pond), Limestone. CI. Closed to taking live bait.

Greenlaw Pond, T12R7&8 WELS. B.

Grey Pond, T12R12 WELS. CI. S-4.

Hafey Pond, T18R11 WELS. CI. S-6, S-19.

Hale Pond and outlet to Hersey town line, Moro Plt. CI. S-4, S-19. Remains open from October 1 - November 30: S-6, S-7.

Hannigan Pond, New Limerick. A. Remains open from October 1 - November 30: S-7.

Hannington Pond, Reed Plt. CI. S-9.

Hanson Brook Lake and tributaries, Mapleton, etc. CI. S-4. Closed to taking live bait. Remains open from October 1 - November 30: S-6, S-7.

Haywire Pond, T1R5 WELS, Benedicta. A. Remains open from October 1 - November 30: S-7.

Hodgdon Mill Pond, Hodgdon. A. Remains open from October 1 - November 30: S-6, S-7.

Horseshoe Pond, T11R10 WELS. CI. S-6, S-19.

Horseshoe Pond, T16R9 WELS. CI. S-4.

Hot Brook Lake, Lower, Bancroft, etc. (see Washington County).

Hunter (Town Line) Pond, Linneus. A. Remains open from October 1 - November 30: S-7.

Hudson Pond, Upper, and outlet. T11R10 WELS. CI. S-5, S-20.

Hunnell Lake and tributaries, St. John Plt. CI. S-4. Closed to taking live bait. From August 16 - September 30: S-6. Total daily bag limit for trout, landlocked salmon and togue: 1 fish.

Huntley Pond, Moro Plt. CI. S-19.

Isie Lake, Eagle Lake. CI. S-4.

Island Pond, T15R9 WELS. CI. S-5, S-19. Closed to taking live bait. Tributaries and outlet: CI. S-19. Closed to taking live bait.

Jones Pond and tributaries, T20R11&12 WELS. CI. S-6, S-17.

Ketchum Lake, TDR2 WELS. CI. S-4.

Lambert Pond, New Limerick. CI. S-4.

Limestone Stream, Limestone. S-4.

Closed to taking live bait.

Lindsay Lake, Easton. CI. S-4.

Logan Lake, Houlton. CI. S-6, S-19.

Remains open from October 1 - November 30: S-6, S-7.

Long Lake, Oakfield. A. Remains open from October 1 - November 30: S-7.

Long Lake, St. Agatha, T17R3&4 WELS, Madawaska, St. Agatha, etc. B. S-2, S-3, S-16. Only 1 landlocked salmon may exceed 16 inches. Tributaries downstream of the first road crossing: S-16. Only 1 landlocked salmon may exceed 16 inches. (See also Fish River Thoroughfares)

Long Lake, T11R13 WELS, etc. (See Allagash Wilderness Waterway listing under Piscataquis County - pages 73-74)

Long Pond, T11R10 WELS. CI. S-4.

Longley Lake, Orient. A. Remains open from October 1 - November 30: S-7.

Lost Pond, Moro Plt. CI. S-19.

Lost Pond, T15R6 WELS. CI. S-4.

Machias Lake, Big, T12R8 WELS. B. Open to ice fishing for smelts from the time the ice forms in the fall until March 31.

Machias Lake, Little, Nashville Plantation. B. Open to ice fishing for smelts from the time ice forms in the fall until March 31.

Macwahoc Lake, Upper, Sherman, T3R4 WELS. A. Remains open from October 1 - November 30: S-7.

Macwahoc Lake, Lower, T2R4 WELS. A. Remains open from October 1 - November 30: S-7.

Madawaska Lake (including Little Madawaska Lake), T16R4 WELS, Westmanland. Open to ice fishing from February 15 - March 31. S-2, S-3, S-19.

AROOSTOOK COUNTY

Remains open from October 1 - November 30: S-6, S-7. Tributaries upstream to the first road crossing: **CI**. S-1, S-19.

Madawaska River, Little, Caribou. From the bridge on the Grimes Road upstream to the former Loring Air Force Base Dam: from June 15 - September 30: S-6.

Mantle Lake, Presque Isle. Fishing restricted to persons under 16 years of age and complimentary license holders only. **CI**. S-4.

Mattaseunk Lake, Molunkus Twp. A. Remains open from October 1 - November 30: S-7.

Mattawamkeag Lake, Upper and Lower, Island Falls, T4R3 WELS. A. Remains open from October 1 - November 30: S-6, S-7.

Mattawamkeag River, Haynesville, Weston, Bancroft, Reed Plt., Drew Plt., Kingman Twp. (See Penobscot County)

McClusky Lake, T14R5 WELS. **CI**. S-4.

McGowan Pond, T11R8 WELS. **CI**. S-4.

McKeen Lake, T14R10 WELS. **CI**. S-6, S-19.

McLean Lake and tributaries, St. Francis. **CI**. S-4, S-19.

McNally Pond, Upper, T11R10 WELS. B. S-19. Remains open from October 1 - November 30: S-6, S-7.

Meduxnekeag River and tributaries upstream to the first highway crossing. From the Rt. 1 bridge in Houlton downstream to the Maine/New Brunswick boundary: S-6, S-17. From August 16 - September 30: S-6. The combined total daily bag limit for landlocked salmon, trout, and togue is 1 fish.

Meduxnekeag River Drainage, Houlton, Hodgdon, etc. S-13.

Meduxnekeag River, South Branch, Hodgdon. On that portion of the river within the Lt. Gordon Manuel Wildlife Management Area, motorboats prohibited

until July 1. After July 1 motorboats over 6 horsepower prohibited.

Mink Marsh Pond, T11R10 WELS. **CI**. S-4.

Moccasin Pond and tributaries and outlet, T14R8 WELS. **CI**. From April 1 - November 30: S-5, S-7.

Molunkus Lake, T1 R5 WELS, Molunkus, Macwahoc. B. Remains open from October 1 - December 31: S-6, S-7.

Monson Pond, Fort Fairfield, Easton. **CI**. S-19. Remains open from October 1 - November 30: S-6, S-7.

Monument Brook, Amity, Orient. S-31.

Mooseleuk Stream. (See Piscataquis County)

Mosquito Brook Pond, T14R7 WELS. **CI**. S-4.

Mud Brook, T17R3 WELS. Open to smelt dipping; 2 quart limit (no commercial harvest).

Mud Lake, T17R4 WELS, etc. **CI**. S-2, S-3, S-16. (See also Fish River Thoroughfares).

Mud Pond and tributaries and outlet, T15R9 WELS. **CI**. S-19.

Mud Lake, T3R3 WELS, T3R4 WELS. **CI**. Remains open from October 1 - November 30: S-6, S-7.

Mud Lake, T4R3 WELS, Oakfield. A. Remains open from October 1 - November 30: S-7.

Mud (Russell) Pond, Linneus. A. S-13, S19. Remains open from October - November 30: S-6, S-7.

Musquacook Lakes, First, Second and Third, T11&12R11 WELS. B. S-16. Closed to taking whitefish.

Musquacook Lake, 4th, T10&11R11, WELS. **CI**. S-16, S-25.

Nadeau Lake, Fort Fairfield. **CI**. S-4, S-19. Closed to taking live bait. Motorboats with more than 10 horsepower prohibited.

Nickerson Lake, New Limerick, Linneus.

AROOSTOOK COUNTY

- B. S-2, S-3, S-19, S-26. Remains open from October 1 - November 30: S-6, S-7.
- No Name Pond**, T13R10 WELS. CI. S-4.
- North Lake**, Orient Twp. S-31.
- North Pond**, T14R9 WELS. CI. S-5, S-19.
- Number Nine Lake and tributaries**, T9R3 WELS. CI. S-4, S-19.
- Otter Lake**, T3R4 WELS. CI. Remains open from October 1 - November 30: S-6, S-7.
- Pearce Brook**, Houlton. From Meduxnekeag River upstream to the Hollywood Road, so-called: fishing restricted to persons under 16 years of age and complimentary license holders only.
- Pelletier Brook Lake (4th)**, T16R9 WELS. CI. S-5, S-16.
- Pelletier Brook Lakes (1st, 2nd, 3rd)**, T16R9 WELS. CI. S-4, S-19.
- Pelletier Brook Lakes (5th and 6th)**, T15R9 WELS. CI. S-4, S-19. Tributaries and outlet: CI. S-19.
- Pennington Pond**, T15R6 WELS. CI. Remains open from October 1 - November 30: S-6, S-7.
- Perch Pond and tributaries**, T15R9 WELS. CI. S-4, S-19. Remains open from October 1 - November 30: S-6, S-7. Outlet: CI. S-19.
- Pete's Pond**, T13R10 WELS. CI. S-4.
- Pleasant Lake**, Island Falls, T4R3 WELS. B. S-2, S-3, S-13, S-19, S-22. Open to ice fishing for smelts from the time the ice forms in the fall until March 31. Remains open from October 1 - December 31: S-6, S-7.
- Plunkett Pond**, Benedicta, Silver Ridge. A. Remains open from October 1 - November 30: S-7.
- Portage Lake**, Portage Lake Twp. B. S-2, S-3, S-16, S-24. No person shall operate any boat or canoe propelled by motor on that portion of Portage Lake known as the Floating Island Area, north and westerly of a line beginning at the eastern edge of the marshy peninsula running out from Hutchinson Ridge, running 50 yards outside of the floating islands in a northerly direction to the mouth of Mosquito Brook.
- Portland Lake**, Bridgewater. B.
- Pratt Lake**, T11R9 WELS. B.
- Presley Lake**, T12R17 WELS. CI. S-4.
- Presque Isle Lake**, T9R3 WELS. CI. S-4.
- Pushineer Pond**, T15R9 WELS. CI. S-4, S-19. No size or bag limit on landlocked salmon. Tributaries: CI. S-19. No size or bag limit on landlocked salmon.
- Read Lake**, Merrill. CI. S-4.
- Red River and tributaries**. From the outlet of Pushineer Pond downstream to the T15R9 WELS and T15R8 WELS town line: S-19. No size or bag limit on landlocked salmon.
- Reed Pond**, Macwahoc Plt. A. Remains open from October 1 - November 30: S-7.
- Ritter Lake**, Bridgewater. CI. S-4.
- Robbins Brook Pond**, T12R11 WELS. CI. S-17. Casting and trolling with artificial flies only.
- Rock Pond**, Moro Plt. CI. S-19.
- Rockabema Lake**, Moro Plt. CI. S-19, S-24.
- Rock Crusher Pond**, Island Falls. Open to fishing from January 1 - December 31: S-9, S-19.
- Rocky Brook and tributaries**, T15R9 WELS. S-19.
- Ross Lake**, Littleton. CI. S-4.
- Round Mountain Pond**, T11R8 WELS. CI. S-19. Remains open from October 1 - November 30: S-6, S-7.
- Round Pond**, T14R8 WELS. CI. S-2, S-3, S-16.
- Round Pond**, T13R12 WELS. (See Allagash Wilderness Waterway listing under Piscataquis County - pages 73-74)
- Rowe Lake**, T11R8 WELS. B. S-19.
- Sag Pond**, T13R10 WELS. CI. S-4.
- Secret Pond**, Moro Plt. CI. S-4, S-19.

AROOSTOOK COUNTY

Silver Lake and tributaries, T15R5 WELS. CI. S-4. Closed to taking live bait.

Skitacook Lake, Oakfield, T4R3 WELS.

A. Remains open from October 1 - November 30: S-7.

Sly Brook Lake, First and Second, New Canada Pt. CI. S-19.

Sly Brook Lake, Third, New Canada Pt. CI. S-19, S-22.

Soldier Pond, including tributaries upstream to the first road or railroad crossing, Wallagrass Pt. CI. S-16. From June 1 - September 30: S-6. From August 16 - September 30: The total daily bag limit for trout, landlocked salmon and togue is 1 fish.

Sowish Lake, T18R10 WELS. CI. S-4.

Spaulding Lake, Oakfield. A. S-19.

Remains open from October 1 - November 30: S-6, S-7.

Squapan Lake, T10&11R4 WELS, Masardis, Ashland. A. S-3, S-19.

Remains open from October 1 - November 30: S-6, S-7.

Square Lake, T15&16R5 WELS. B. S-2, S-3, S-16, S-24. (See also Fish River thoroughfares)

St. Croix Lake, T7&8R4 WELS. B.

St. Froid Lake, Winterville Pt., T14R7 WELS. B. S-2, S-3, S-16, S-24.

Minimum length limit on whitefish: 16 inches. (See also Fish River Thoroughfares)

St. Francis River. S-31.

St. John River. From the confluence with the St. Francis River downstream to the eastern most border of the town of Hamlin. (Maine/New Brunswick border) S-31.

St. John River, T11R16&17, T12R15&16, T13R14&15, T14R13&14, T15R13, T16R12 WELS, Allagash, St. Francis (upstream of the confluence with the St. Francis River). S-13. From October 1 - November 30: S-6, S-13. Open to taking bass and muskellunge only. These

regulations also apply on the Northwest Branch of the St. John, T11&12R17 WELS.

Stink Pond, T15R9 WELS. CI. S-5, S-7.

Sucker Lake, Weston. A. Remains open from October 1 - November 30: S-7.

Sweeney Pond, T12R12 WELS. CI. S-4.

The Thoroughfare, between North and East Grand Lakes. S-31.

Threemile Pond, T12R12 WELS. CI. S-4.

Timoney Lake and tributaries, Oakfield, etc. CI. S-4. Motorboats over 10 horsepower prohibited. Remains open from October 1 - November 30: S-6, S-7.

Togue Pond and tributaries and outlet, T15R9 WELS. CI. S-19.

Tote Road Pond and tributaries and outlet, Moro Pt. CI. S-5, S-19.

Trafton Lake and tributaries, Limestone. CI. S-4.

Two Mile Pond, T16R13&14 WELS. CI. S-4, S-19.

Ugh Lake, T12R14 WELS. CI. S-4.

Remains open from October 1 - November 30: S-6, S-7.

Umcolcus Lake, T7R5&6 WELS, T8R5&6 WELS. A. S-19. Remains open from October 1 - November 30: S-6, S-7.

Umsaskis Lake, T11R13 WELS, etc. (See Allagash Wilderness Waterway listing under Piscataquis County - pages 73-74)

Upper Pond, T15R9 WELS. CI. S-5, S-19. Tributaries and outlet: CI. S-19.

Violette Brook Lake, Cyr Pt. CI. S-4.

Wallagrass Lakes (1st and 2nd), Wallagrass Pt, etc. CI. S-4, S-19, S-24.

Wallagrass Lake (3rd) and tributaries upstream to the first road crossing, St. John Pt., St. Francis. CI. S-4, S-19.

Weeks Pond, T11R8 WELS. CI. S-4.

Wheelock Lake, St. John Pt. B.

Whitehead Lake, Bridgewater. CI. S-4.

Wytopitlock Lake, Glenwood Pt., T2R4 WELS. A. Remains open from October 1 - November 30: S-7.